

fienza[®]

Sanitaryware



TOILETS · BASINS · BATHS





Contents

TOILETS

| | |
|-------------------------------|-------|
| Toilets Guide | 4–5 |
| Back-to-Wall Suites | 6–10 |
| Adjustable Link Suites | 11 |
| Close-Coupled Toilet Suites | 12 |
| Wall-Hung & Wall-Faced Suites | 14–19 |
| In-Wall Flush Buttons | 20–21 |

BASINS

| | |
|---------------------------|-------|
| Basins Guide | 22 |
| Encanto Collection | 23 |
| Petra Collection | 24–25 |
| Reba Collection | 26–27 |
| Above Counter: Ceramic | 28–31 |
| Above Counter: Concrete | 31 |
| Above Counter: Cast Stone | 32 |
| Semi-Inset Basins | 33 |
| Fully-Inset Basins | 34 |
| Semi-Recessed Basins | 35 |
| Pedestal Basins | 36 |
| Undermount Basins | 37 |
| Wall Basins | 38–41 |
| Basin Accents | 42 |

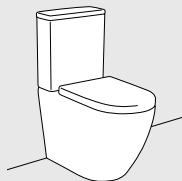
BATHS

| | |
|----------------------|-------|
| Freestanding Acrylic | 43–47 |
| Corner Acrylic | 48–49 |
| Back-to-Wall Acrylic | 50–51 |
| Resin Stone | 52 |
| Concrete | 53 |
| Cast Stone | 54–59 |

All prices are Recommended Retail Prices (RRP) including GST. Prices are subject to change or correction without notification. Consumers should enquire with a retailer for actual pricing. All information is provided on an E&OE basis (Errors and Omissions Excepted). Always check [fienza.com.au](https://www.fienza.com.au) for the latest, up-to-date product information. Images shown are representations only. Physical colour may vary from images shown. Visit your nearest retailer to view physical samples before buying. Some images are shown with accessories and/or furniture, which are not included in the price, and such products may not be available within our range.

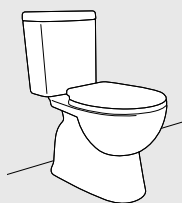
TOILETS

Designs



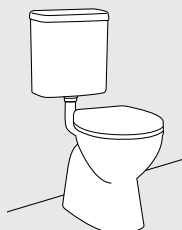
BACK-TO-WALL

These suites are designed with both the pan and cistern sitting flush against the wall. The design removes any gaps or crevices making it much easier to clean the external area of your toilet suite.



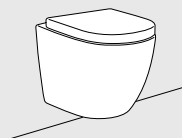
CLOSE-COUPLED

For a close-coupled suite, the cistern and pan are joined with an exposed area at the back of the pan. These suites are ideal for retrofit applications where the bottom inlet from the cistern needs to connect to an existing tap in the room.



ADJUSTABLE LINK

An adjustable link suite is similar to a close-coupled suite, but with an adjustable link connector that allows greater flexibility for renovation applications. The pipe link is adjustable so that the pan can be installed above existing pipework in the floor.



WALL-HUNG

Wall-hung suites are mounted on the wall with space between the pan and the floor. The cistern is enclosed in the wall for a minimalist design.



WALL-FACED

Wall-faced suites sit on the floor with their cisterns enclosed in the wall for a clean, tidy look.

Features



NANO-GLAZE PROTECTION

Nano-glaze is available on selected Fienza toilet suites. Nano-glaze is a technology that was originally developed by NASA. This is an incredibly fine, ultra-smooth barrier that coats the inner pan keeping it cleaner and protecting it from bacteria.

Unlike some other toilet suites on the market, our nano-glaze covers the entire trap as well as the inner pan.



SOFT-CLOSE, QUICK RELEASE TOILET SEATS

The majority of our seats are soft-closing and feature a one-touch quick release mechanism, making cleaning a breeze. Open the lid to the upright position, press the button, and lift straight upwards to remove the seat completely. After cleaning, just click the seat back onto the stainless-steel pins on the pan.



HIGH QUALITY TOILET SEATS

Many of our toilet seats are made with Urea-formaldehyde (UF), which will not yellow, maintaining its bright white finish even if exposed in sunlight. UF provides a satisfying quality-feel, as it is heavier than polypropylene.



RIMLESS HYGIENIC FLUSH PANS

Many Fienza suites come with a rimless hygienic flush pan design.

With rimless pans there is nowhere for bacteria or grime to build up, and makes the pan easier to clean. Flushing performance is also more efficient and washes the complete bowl.

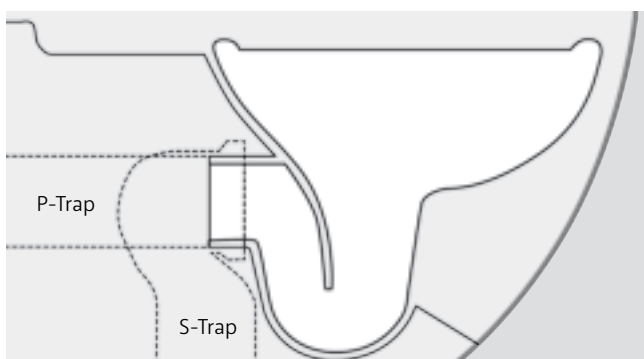


EXTRA HEIGHT PANS

With a little extra height, these toilet pans make it easier to get on and off the seat. Standard pan heights range from approximately 400-420 mm, while taller pans range from 440-455 mm high. Look for the Extra Height symbol on each page and find full specifications on our website: fienza.com.au

FLUSH PIPE INSTALLATIONS

There are two main types of flushing installations for any toilet suite: P-Trap and S-Trap. If your flush pipe needs to go through the wall, then a P-Trap would be suitable. Alternatively, an S-Trap allows for the flush pipe to go through the floor.

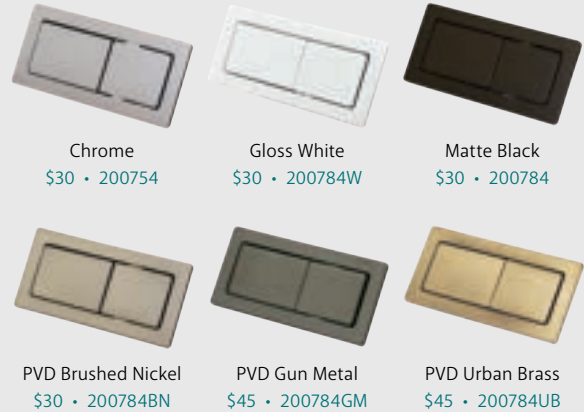


Accents

Style your toilet suite to match your bathroom fittings with our optional coloured flush buttons and seat hinge covers.

RECTANGULAR FLUSH BUTTONS

For Back-to-Wall Suites



STANDARD SEAT HINGE COVERS

Matte White (Pair) \$25 • 202069MW

Matte Black (Pair) \$25 • 202069

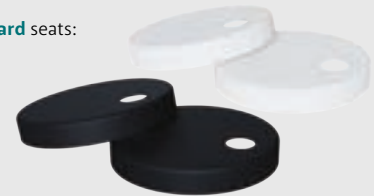
50 mm Diameter

Suits the following toilet suites with **Standard** seats:

- Alix
- Chica
- Delta
- Empire
- Escola
- Isabella
- Kaya
- Koko
- Lambada
- RAK-Washington
- RAK-Liwa
- RAK-Resort (Wall-Faced only)
- RAK-Compact (Wall-Faced only)

Suits the following **Standard** seats:

- Universal (UF1002)
- Empire (UF2009)
- Compact (UF3043)



SLIM SEAT HINGE COVERS

Matte White (Pair) \$25 • 200307MW

Matte Black (Pair) \$25 • 200307MB

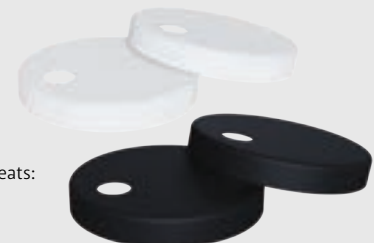
60 mm Diameter

Suits the following toilet suites with **Slim** seats:

- Alix Slim
- Empire Slim
- Isabella Slim
- Kaya Slim
- Koko Slim

Suits the following **Slim** seats:

- Koko Slim (UF5018)
- Slim (UF5019)



Back-to-Wall

TOILET SUITES



KAYA
Back-to-Wall Toilet Suite
P-Trap \$564 • K021P



Rimless



Soft Close

KOKO®

P-Trap \$554 • K002P

S-Trap 90-160 \$589 • K002A

S-Trap 160-230 \$604 • K002B

WELS 4 Star rated, 4.6L/3L (3.3L average flush)



Rimless



Soft Close

ISABELLA

P-Trap \$525 • K014P

S-Trap 90-160 \$560 • K014A

S-Trap 160-230 \$575 • K014B

WELS 4 Star rated, 4.5L/3L (3.3L average flush)



NEW



Rimless



Extra Height



Soft Close

KAYA®

P-Trap \$539 • K021P-1

S-Trap 90-160 \$574 • K021A-1

S-Trap 160-230 \$589 • K021B-1

WELS 4 Star rated, 4.6L/3L (3.3L average flush)



Rimless



Soft Close

KOKO® Slim Seat

P-Trap \$579 • K002P-2

S-Trap 90-160 \$614 • K002A-2

S-Trap 160-230 \$629 • K002B-2

WELS 4 Star rated, 4.6L/3L (3.3L average flush)



Rimless



Soft Close

KOKO® Matte White

P-Trap \$999 K002MWP

S-Trap 90-160 \$1034 • K002MWA

S-Trap 160-230 \$1049 K002MWB

WELS 4 Star rated, 4.6L/3L (3.3L average flush)



Rimless



Soft Close

KOKO® Matte Black

P-Trap \$999 • K002MBP

S-Trap 90-160 \$1034 • K002MBA

S-Trap 160-230 \$1049 • K002MBB

WELS 4 Star rated, 4.6L/3L (3.3L average flush)



Rimless



Soft Close

ISABELLA Slim Seat

P-Trap \$555 • K014P-2

S-Trap 90-160 \$590 • K014A-2

S-Trap 160-230 \$605 • K014B-2

WELS 4 Star rated, 4.5L/3L (3.3L average flush)



Rimless



Extra Height



Soft Close

KAYA® Slim Seat

P-Trap \$564 • K021P

S-Trap 90-160 \$599 • K021A

S-Trap 160-230 \$614 • K021B

WELS 4 Star rated, 4.6L/3L (3.3L average flush)



ISABELLA Slim Seat
Back-to-Wall Toilet Suite
P-Trap \$555 • K014P-2



CHLOE
Back-to-Wall Toilet Suite
P-Trap \$594 • K018P



Nano Glaze



Soft Close



Short Projection

EMPIRE

P-Trap \$560 • K003P
S-Trap 90-160 \$595 • K003A
S-Trap 160-230 \$610 • K003B

WELS 4 Star rated, 4.4L/3L (3.3L average flush)



EMPIRE Slim Seat

P-Trap \$575 • K003P-2
S-Trap 90-160 \$610 • K003A-2
S-Trap 160-230 \$625 • K003B-2

WELS 4 Star rated, 4.4L/3L (3.3L average flush)



Rimless



Soft Close

CHLOE

P-Trap \$594 • K018P
S-Trap 90-160 \$629 • K018A
S-Trap 160-230 \$644 • K018B

WELS 4 Star rated, 4.5L/2.9L (3.3L average flush)



Rimless



Soft Close

HANA

P-Trap \$564 • K8381P
S-Trap 90-160 \$599 • K8381A
S-Trap 160-230 \$614 • K8381B

WELS 4 Star rated, 4.6L/3L (3.3L average flush)



Nano Glaze



Rimless



Soft Close



Extra Height

DELTA

P-Trap \$614 • K005P
S-Trap 90-160 \$649 • K005A
S-Trap 160-230 \$664 • K005B

WELS 4 Star rated, 4.5L/3L (3.3L average flush)



Rimless



Soft Close

ESCOLA

P-Trap \$425 • K1223P
S-Trap 90-160 \$460 • K1223A
S-Trap 160-230 \$475 • K1223B

WELS 4 Star rated, 4.5L/3L (3.3L average flush)




Ambulant
Compliant

-  Rimless
-  Extra Height
-  Soft Close
-  Short Projection

ALIX

P-Trap \$604 • K011P
 S-Trap 90-160 \$639 • K011A
 S-Trap 160-230 \$654 • K011B
 WELS 4 Star rated, 4.6L/3L (3.3L average flush)

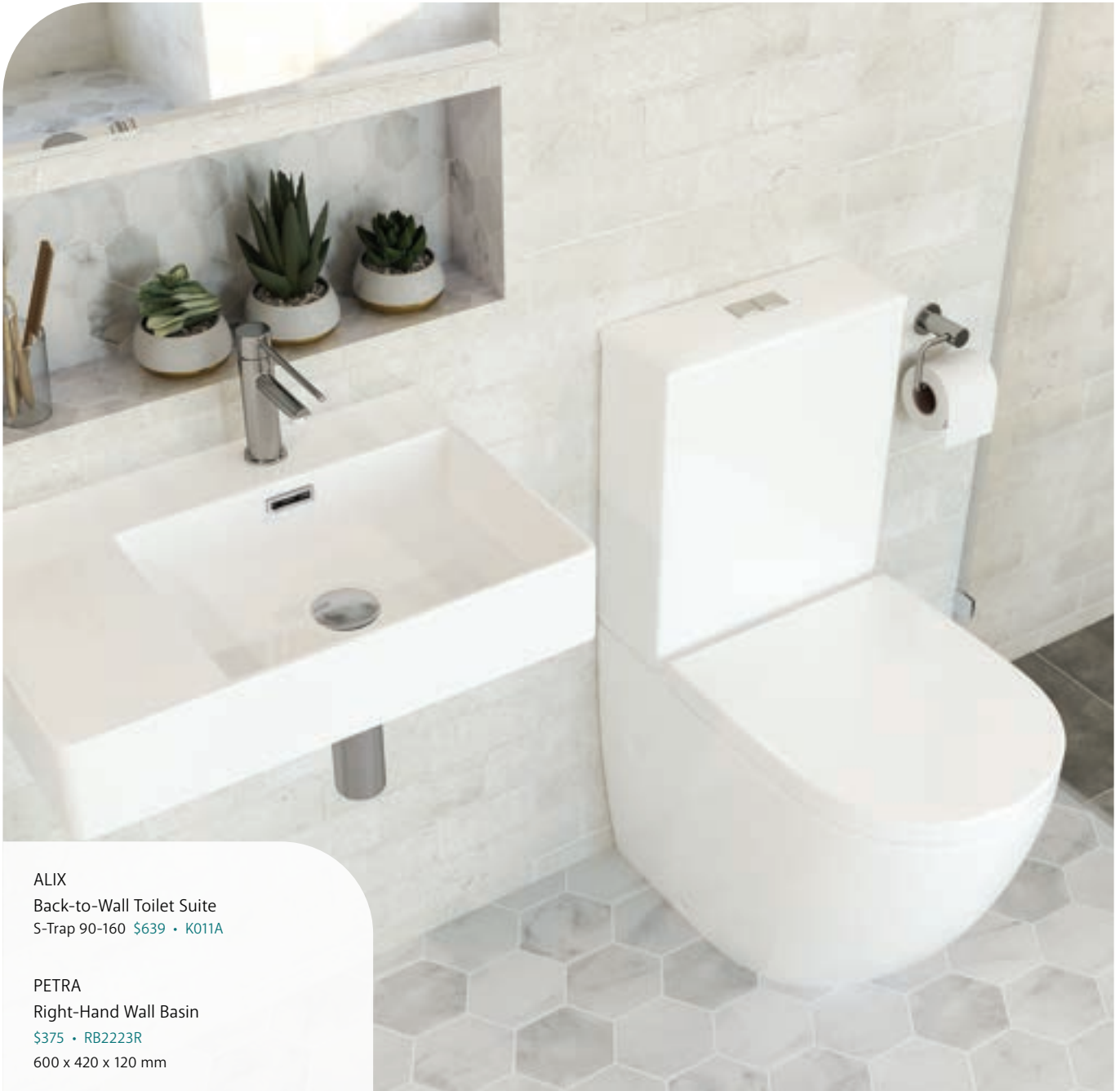



Ambulant
Compliant

-  Rimless
-  Extra Height
-  Soft Close
-  Short Projection

ALIX Slim Seat

P-Trap \$634 • K011P-2
 S-Trap 90-160 \$669 • K011A-2
 S-Trap 160-230 \$684 • K011B-2
 WELS 4 Star rated, 4.6L/3L (3.3L average flush)



ALIX
 Back-to-Wall Toilet Suite
 S-Trap 90-160 \$639 • K011A

PETRA
 Right-Hand Wall Basin
 \$375 • RB2223R
 600 x 420 x 120 mm



Rimless



Soft Close

RAK
CERAMICS

RAK-SENSATION

P-Trap \$1199 • 616426W

S-Trap 100-120 \$1259 • 616426WA

WELS 4 Star rated, 4.5L/3L (3.4L average flush)



Rimless



Soft Close

RAK
CERAMICS

RAK-MORNING

Bottom Inlet, P-Trap \$650 • 576139W

Bottom Inlet, S-Trap 150 \$720 • 576139WA

Top Inlet, P-Trap \$650 • 586239W

Top Inlet, S-Trap 150 \$720 • 586239WA

WELS 4 Star rated, 4.5L/3L (3.3L average flush)



Soft Close

RAK
CERAMICS

RAK-MOON

P-Trap \$1030 • 473546W

S-Trap 90-140 \$1065 • 473546WA

WELS 4 Star rated, 4.5L/3L (3.3L average flush)



Rimless



Extra Height



Soft Close

RAK
CERAMICS

RAK-RESORT

Bottom Inlet, P-Trap \$669 • 385447W

Bottom Inlet, S-Trap 90-200 \$699 • 385447WA

Top Inlet, P-Trap \$669 • 406047W

Top Inlet, S-Trap 90-200 \$699 • 406047WA

WELS 4 Star rated, 4.5L/3L (3.3L average flush)



Ambulant
Compliant



Extra Height



Soft Close

RAK
CERAMICS

RAK-COMPACT

P-Trap \$595 • 345130W

S-Trap 70-160 \$630 • 345130WA

S-Trap 160-210 \$645 • 345130WB

WELS 4 Star rated, 4.5L/3L (3.3L average flush)



Adjustable Link

TOILET SUITES



STELLA

S-Trap 140-255 \$320 • K001

WELS 4 Star rated, 4.4L/3L (3.3L average flush)



Soft Close

RAK
CERAMICS

RAK-WASHINGTON Front Lever

P-Trap \$1399 • 870630W

S-Trap 270-320 \$1399 • 870630WA

WELS 4 Star rated, 4.5L/3L (3.4L average flush)



Extra Height

STELLA SENIOR

S-Trap 300-340 • \$449 • K001S

WELS 4 Star rated, 4.4L/3L (3.3L average flush)



Junior

STELLA JUNIOR

S-Trap 180-230 • \$499 • K001J

WELS 4 Star rated, 4.4L/3L (3.3L average flush)



Close-Coupled

TOILET SUITES



Soft Close

RAK-WASHINGTON White
 P-Trap \$849 • 070130W
 S-Trap 240 \$849 • 060130W
 WELS 4 Star rated, 4.5L/3L
 (3.4L average flush)



Rimless



Extra Height



Soft Close

STELLA

P-Trap \$345 • K009P
 S-Trap \$345 • K009

WELS 4 Star rated, 4.3L/2.8L (3.1L average flush)



Soft Close

RAK
 CERAMICS

RAK-WASHINGTON Front Lever

P-Trap \$1035 • 070130WS
 S-Trap 240 \$1035 • 060130WS

WELS 4 Star rated, 4.5L/3L (3.4L average flush)



Soft Close

RAK
 CERAMICS

RAK-WASHINGTON Ivory

S-Trap 240 \$1099 • 060122I

WELS 4 Star rated, 4.5L/3L (3.4L average flush)



Rimless



Soft Close

CHICA

P-Trap \$415 • K0123P
 S-Trap 90-160 \$450 • K0123A
 S-Trap 160-230 \$465 • K0123B
 Skew Trap \$469 • K0123C

WELS 4 Star rated, 4.4L/2.8L (3.2L average flush)



Soft Close

RAK
 CERAMICS

RAK-LIWA White

P-Trap \$410 • 222730W
 S-Trap 140 \$410 • 122730W
 S-Trap 240 \$410 • 322730W

WELS 4 Star rated, 4.5L/3L (3.3L average flush)



Soft Close

RAK
 CERAMICS

RAK-LIWA Ivory

P-Trap \$565 • 222722I
 S-Trap 140 \$565 • 122722I

WELS 4 Star rated, 4.5L/3L (3.3L average flush)



RAK-WASHINGTON Front Lever
Close-Coupled Toilet Suite
P-Trap \$1035 • 070130WS
S-Trap 240 \$1035 • 060130WS
WELS 4 Star rated, 4.5L/3L (3.4L average flush)

ELEANOR Oval Gloss White
Above Counter Basin
\$249 • RB464
580 x 360 x 100 mm

Modern Vintage
COLLECTION



Wall-Hung TOILET SUITES

CONCEALED
IN-WALL CISTERNS



R&T In-Wall Cistern and Frame for Wall-Hung Pan



GEBERIT SIGMA 8 Duofix In-Wall Cistern and Frame for Wall-Hung Pan



CONCEALED
UNDER-COUNTER CISTERNS



GEBERIT KAPPA Duofix Under-Counter Cistern and Frame for Wall-Hung Pan Includes Sigma adaptor. Must be installed at rough in.





KOKO® Gloss White
WELS 4 Star rated, 4.5L/3.2L (3.5L average flush)



Rimless



Soft Close

TOILET SUITE COMBINATIONS

*Flush buttons required (not included in price), see page 18.



KOKO® Gloss White Wall-Hung Pan and Seat
+ R&T In-Wall Cistern and Frame
\$924* • K2376W-RT



KOKO® Gloss White Wall-Hung Pan and Seat
+ GEBERIT SIGMA 8 Duofix In-Wall
Cistern and Frame
\$1399* • K2376W-GE



KOKO® Gloss White Wall-Hung Pan and Seat
+ GEBERIT KAPPA Duofix Under-Counter
Cistern and Frame
\$1399* • K2376W-GK



KOKO® Matte White
WELS 4 Star rated, 4.5L/3.2L (3.5L average flush)



Rimless



Soft Close

TOILET SUITE COMBINATIONS

*Flush buttons required (not included in price), see page 18.



KOKO® Matte White Wall-Hung Pan and Seat
+ R&T In-Wall Cistern and Frame
\$1224* • K2376MW-RT



KOKO® Matte White Wall-Hung Pan and Seat
+ GEBERIT SIGMA 8 Duofix In-Wall
Cistern and Frame
\$1699* • K2376MW-GE



KOKO® Matte White Wall-Hung Pan and Seat
+ GEBERIT KAPPA Duofix Under-Counter
Cistern and Frame
\$1699* • K2376MW-GK



KOKO® Matte Black
WELS 4 Star rated, 4.5L/3.2L (3.5L average flush)



Rimless



Soft Close

TOILET SUITE COMBINATIONS

*Flush buttons required (not included in price), see page 18.



KOKO® Matte Black Wall-Hung Pan and Seat
+ R&T In-Wall Cistern and Frame
\$1324* • K2376MB-RT



KOKO® Matte Black Wall-Hung Pan and Seat
+ GEBERIT SIGMA 8 Duofix In-Wall
Cistern and Frame
\$1799* • K2376MB-GE



KOKO® Matte Black Wall-Hung Pan and Seat
+ GEBERIT KAPPA Duofix Under-Counter
Cistern and Frame
\$1799* • K2376MB-GK



RAK-CLOUD Matte White
WELS 4 Star rated, 4.4L/3.1L (3.4L average flush)

TOILET SUITE COMBINATIONS

*Flush buttons required (not included in price), see page 18.



RAK-CLOUD Wall-Hung Pan and Seat
+ R&T In-Wall Cistern and Frame
\$1675* • 757750MW



RAK-CLOUD Wall-Hung Pan and Seat
+ GEBERIT SIGMA 8 Duofix In-Wall
Cistern and Frame
\$2150* • 757550MW



RAK-CLOUD Wall-Hung Pan and Seat
+ GEBERIT KAPPA Duofix Under-Counter
Cistern and Frame
\$2150* • 757650MW



Wall-Faced TOILET SUITES

CONCEALED
IN-WALL CISTERNS



R&T In-Wall Cistern
for Floor-Mounted/
Wall-Faced Pan



GEBERIT SIGMA 8 In-Wall
Cistern for Floor-Mounted/
Wall-Faced Pan

CONCEALED
UNDER-COUNTER
CISTERNS



GEBERIT KAPPA Under-Counter Cistern
for Floor-Mounted/Wall-Faced Pan
Includes Sigma adaptor. Must be installed at rough in.





KOKO® Gloss White
WELS 4 Star rated, 4.5L/3L (3.3L average flush)



Rimless



Soft Close

TOILET SUITE COMBINATIONS

*Flush buttons required (not included in price), see page 18.



KOKO® Gloss White Wall-Faced Pan and Seat + R&T In-Wall Cistern

P-Trap \$730* • K002376-RT

S-Trap \$780* • K002376A-RT



KOKO® Gloss White Wall-Faced Pan and Seat + GEBERIT SIGMA 8 In-Wall Cistern

P-Trap \$930* • K002376-GE

S-Trap \$980* • K002376A-GE



KOKO® Gloss White Wall-Faced Pan and Seat + GEBERIT KAPPA Under-Counter Cistern

P-Trap \$930* • K002376-GK

S-Trap \$980* • K002376A-GK



KOKO® Matte White
WELS 4 Star rated, 4.5L/3L (3.3L average flush)



Rimless



Soft Close

TOILET SUITE COMBINATIONS

*Flush buttons required (not included in price), see page 18.



KOKO® Matte White Wall-Faced Pan and Seat + R&T In-Wall Cistern

P-Trap \$1009* • K002376MW-RT

S-Trap \$1059* • K002376MWA-RT



KOKO® Matte White Wall-Faced Pan and Seat + GEBERIT SIGMA 8 In-Wall Cistern

P-Trap \$1209* • K002376MW-GE

S-Trap \$1259* • K002376MWA-GE



KOKO® Matte White Wall-Faced Pan and Seat + GEBERIT KAPPA Under-Counter Cistern

P-Trap \$1209 • K002376MW-GK

S-Trap \$1259 • K002376MWA-GK



KOKO® Matte Black
WELS 4 Star rated, 4.5L/3L (3.3L average flush)



Rimless



Soft Close

TOILET SUITE COMBINATIONS

*Flush buttons required (not included in price), see page 18.



KOKO® Matte Black Wall-Faced Pan and Seat + R&T In-Wall Cistern

P-Trap \$1109* • K002376MB-RT

S-Trap \$1159* • K002376MBA-RT



KOKO® Matte Black Wall-Faced Pan and Seat + GEBERIT SIGMA 8 In-Wall Cistern

P-Trap \$1309* • K002376MB-GE

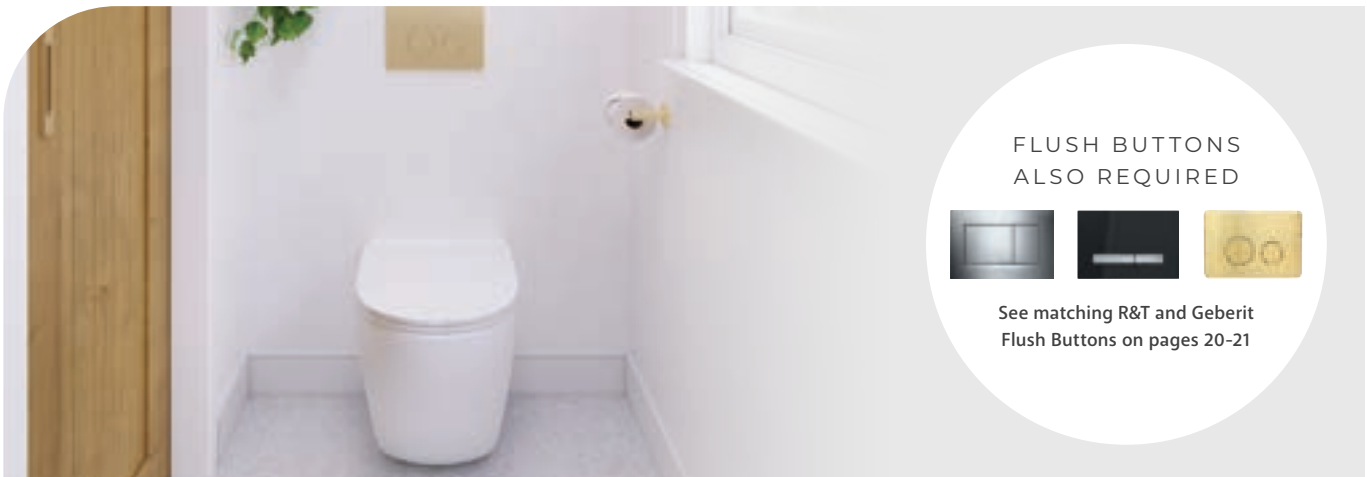
S-Trap \$1359* • K002376MBA-GE



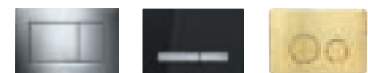
KOKO® Matte Black Wall-Faced Pan and Seat + GEBERIT KAPPA Under-Counter Cistern

P-Trap \$1309* • K002376MB-GK

S-Trap \$1359* • K002376MBA-GK



FLUSH BUTTONS
ALSO REQUIRED



See matching R&T and Geberit
Flush Buttons on pages 20-21



ISABELLA

WELS 4 Star rated, 4.4L/3L (3.3L average flush)



Rimless



Soft Close

TOILET SUITE COMBINATIONS

*Flush buttons required (not included in price), see page 18.



ISABELLA Wall-Faced Pan and Seat
+ R&T In-Wall Cistern
P-Trap \$730* • K019-RT
S-Trap \$780* • K019A-RT



ISABELLA Wall-Faced Pan and Seat
+ GEBERIT SIGMA 8 In-Wall Cistern
P-Trap \$930* • K019-GE
S-Trap \$980* • K019A-GE



ISABELLA Wall-Faced Pan and Seat
+ GEBERIT KAPPA Under-Counter Cistern
P-Trap \$930* • K019-GK
S-Trap \$980* • K019A-GK



ISABELLA Slim Seat

WELS 4 Star rated, 4.4L/3L (3.3L average flush)



Rimless



Soft Close

TOILET SUITE COMBINATIONS

*Flush buttons required (not included in price), see page 18.



ISABELLA Wall-Faced Pan and Slim Seat
+ R&T In-Wall Cistern
P-Trap \$755* • K019-RT-2
S-Trap \$805* • K019A-RT-2



ISABELLA Wall-Faced Pan and Slim Seat
+ GEBERIT SIGMA 8 In-Wall Cistern
P-Trap \$955* • K019-GE-2
S-Trap \$1005* • K019A-GE-2



ISABELLA Wall-Faced Pan and Slim Seat
+ GEBERIT KAPPA Under-Counter Cistern
P-Trap \$955* • K019-GK-2
S-Trap \$1005* • K019A-GK-2



ALIX

WELS 4 Star rated, 4.6L/3L (3.4L average flush)



Ambulant Compliant



Rimless



Soft Close

TOILET SUITE COMBINATIONS

*Flush buttons required (not included in price), see page 18.



ALIX Wall-Faced Pan & Seat
+ R&T In-Wall Cistern
P-Trap \$830* • K025-RT
S-Trap \$880* • K025A-RT



ALIX Wall-Faced Pan & Seat
+ Geberit SIGMA In-Wall Cistern
P-Trap \$1030* • K025-GE
S-Trap \$1080* • K025A-GE



ALIX Wall-Faced Pan & Seat
+ Geberit KAPPA Under-Counter Cistern
P-Trap \$1030* • K025-GK
S-Trap \$1080* • K025A-GK



ALIX Slim Seat

WELS 4 Star rated, 4.6L/3L (3.4L average flush)



Ambulant Compliant



Rimless



Soft Close

TOILET SUITE COMBINATIONS

*Flush buttons required (not included in price), see page 18.



ALIX Wall-Faced Pan & Slim Seat
+ R&T In-Wall Cistern
P-Trap \$855* • K025-RT-2
S-Trap \$905* • K025A-RT-2



ALIX Wall-Faced Pan & Slim Seat
+ Geberit SIGMA In-Wall Cistern
P-Trap \$1055* • K025-GE-2
S-Trap \$1105* • K025A-GE-2



ALIX Wall-Faced Pan & Slim Seat
+ Geberit KAPPA Under-Counter Cistern
P-Trap \$1055* • K025-GK-2
S-Trap \$1105* • K025A-GK-2



RAK-CLOUD Matte White

WELS 4 Star rated, 4.4L/3L (3.3L average flush)



Rimless



Soft Close



TOILET SUITE COMBINATIONS

*Flush buttons required (not included in price), see page 18.



RAK-CLOUD Wall-Faced Pan and Seat
+ R&T In-Wall Cistern

P-Trap \$1569* • 897750MW

S-Trap \$1604* • 897750MWA



RAK-CLOUD Wall-Faced Pan and Seat
+ GEBERIT SIGMA 8 In-Wall Cistern

P-Trap \$1769* • 897550MW

S-Trap \$1804* • 897550MWA



RAK-CLOUD Wall-Faced Pan and Seat
+ GEBERIT KAPPA Under-Counter Cistern

P-Trap \$1769* • 897650MW

S-Trap \$1804* • 897650MWA



RAK-SENSATION

WELS 4 Star rated, 4.5L/3L (3.4L average flush)



Rimless



Soft Close



TOILET SUITE COMBINATIONS

*Flush buttons required (not included in price), see page 18.



RAK-SENSATION Wall-Faced Pan and Seat
+ R&T In-Wall Cistern

P-Trap \$1230* • 887726W

S-Trap \$1290* • 887726WA



RAK-SENSATION Wall-Faced Pan and Seat
+ GEBERIT SIGMA 8 In-Wall Cistern

P-Trap \$1460* • 887526W

S-Trap \$1520* • 887526WA



RAK-SENSATION Wall-Faced Pan and Seat
+ GEBERIT KAPPA Under-Counter Cistern

P-Trap \$1460* • 887626W

S-Trap \$1520* • 887626WA



RAK-RESORT

WELS 4 Star rated, 4.5L/3L (3.5L average flush)



Rimless



Soft Close



TOILET SUITE COMBINATIONS

*Flush buttons required (not included in price), see page 18.



RAK-RESORT Wall-Faced Pan and Seat
+ R&T In-Wall Cistern

P-Trap \$779 • 847747W

S-Trap not available



RAK-RESORT Wall-Faced Pan and Seat
+ GEBERIT SIGMA 8 In-Wall Cistern

P-Trap \$999 • 847547W

S-Trap not available



RAK-RESORT Wall-Faced Pan and Seat
+ GEBERIT KAPPA Under-Counter Cistern

P-Trap \$999 • 847647W

S-Trap not available





fienza FLUSH BUTTONS

For use with



Cisterns



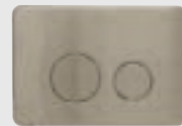
Chrome
ABS Construction
\$149 • JB11-C



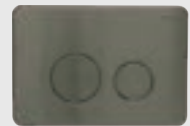
Matte Black
ABS Construction
\$149 • JB11B



Round Stainless Steel
Stainless Steel
\$199 • JB11



Round Brushed Nickel
Stainless Steel, PVD Finish
\$399 • JB11BN



Round Gun Metal
Stainless Steel, PVD Finish
\$399 • JB11GM



Round Urban Brass
Stainless Steel, PVD Finish
\$399 • JB11UB



Chrome
ABS Construction
\$120 • JB60C



Matte Black
ABS Construction
\$149 • JB60B



Gloss White
ABS Construction
\$149 • JB60W

Designed in Switzerland • Made in Europe

STANDARD (Stocked Items)



Round Chrome,
Matte Chrome Trim
ABS Construction
\$230 • SIG20-C



Round Matte Chrome,
Chrome Trim
ABS Construction
\$230 • SIG20-S



Round Brushed
Chrome, Chrome Trim
Stainless Steel
\$399 • SIG20-BSS



Round Matte White,
White Trim
ABS Construction
\$230 • SIG20-WH



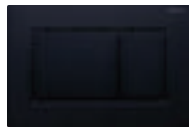
Round Matte Black,
Black Trim
ABS Construction
\$230 • SIG20-BL



Rectangular Chrome,
Matte Chrome Trim
ABS Construction
\$190 • SIG30-C



Rectangular Matte
White, White Trim
ABS construction
\$230 • SIG30-WH

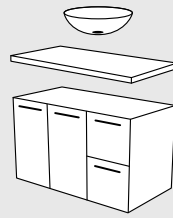


Rectangular Matte
Black, Black Trim
ABS Construction
\$230 • SIG30-BL



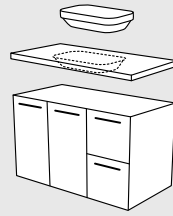
Round White,
Chrome Trim
Premium Glass
\$430 • SIG21-W
(Special Order - 1 week lead time)





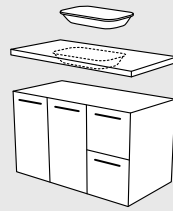
ABOVE COUNTER

These basins sit on top of the counter and provide extra height, helping to keep your counter top clean. They make a great focal point or centrepiece.



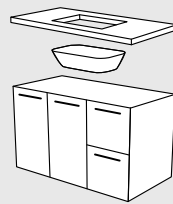
SEMI-INSET

Semi-inset basins are a design hybrid of the above counter and fully-inset basin types. They are a great option for those wanting an above counter look without compromising on counter space.



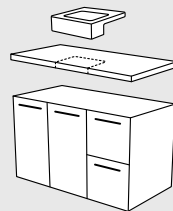
FULLY-INSET

Much of this basin is inset below the counter top with a low-profile lip to help it sit in place. Often referred to as a drop-in basin, it requires a special cut in the counter top so it can be dropped in and fitted securely.



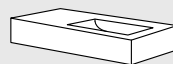
UNDERMOUNTED

This type of basin is mounted to the counter top from underneath. They provide plenty of counter space and make cleaning easy.



SEMI-RECESSED

This basin is partially recessed into the counter top with the basin protruding from the front of the vanity. They provide easier access to the tap and bowl and are great for small bathrooms or powder rooms with shallow counter tops.



WALL-MOUNTED

Wall-mounted, or wall-hung basins are mounted to the wall leaving clear space underneath where the pipework and fittings are exposed. This space saving design is perfect for small bathrooms and those requiring wheelchair access.



Vitreous China



Cast Stone
(Structural)



Cast Stone
(Finish)



Concrete

For full warranty terms and conditions, visit [fienza.com.au](https://www.fienza.com.au)

Encanto

COLLECTION

Encanto is a sleek and contemporary collection of matte white cast stone solid surface, wall-mounted basins. They are available in various sizes and bowl positions, offering flexibility for any residential or commercial bathroom.



ENCANTO 470, Right-Hand
1 tap hole \$480 • CSB11-47
No tap hole \$480 • CSB11-47-0
470 x 300 x 115 mm



ENCANTO 700, Left-Hand
1 tap hole \$699 • CSB11-70L
No tap hole \$699 • CSB11-70L-0
700 x 450 x 110 mm

ENCANTO 700, Right-Hand
1 tap hole \$699 • CSB11-70R
No tap hole \$699 • CSB11-70R-0
700 x 450 x 110 mm



ENCANTO 1000, Centre Bowl
1 tap hole \$899 • CSB11-100
No tap hole \$899 • CSB11-100-0
1000 x 450 x 135 mm



ENCANTO 1200, Left-Hand
1 tap hole \$999 • CSB11-120L
No tap hole \$999 • CSB11-120L-0
1200 x 450 x 135 mm

ENCANTO 1200, Centre Bowl
1 tap hole \$999 • CSB11-120
No tap hole \$999 • CSB11-120-0
1200 x 450 x 135 mm



Petra

COLLECTION

The Petra collection is styled to provide a spacious wide bowl shape with softly rounded corners for a distinctly modern look. Lending itself to a wide range of bathroom styles and configurations, the Petra collection offers a timeless piece that can easily be accented with unique tapware and pop-up waste finishes.



PETRA Above Counter
No Tap Hole
\$199 • RB196
390 x 390 x 130 mm



PETRA MINI Above Counter
\$249 • RB2177
420 x 420 x 120 mm



PETRA Above Counter
1 tap hole \$249 • RB2173
3 tap holes \$299 • RB2173-3
500 x 420 x 120 mm



PETRA Matte Black Above Counter
1 tap hole \$460 • RB2173B
3 tap holes \$510 • RB2173B-3
500 x 420 x 120 mm



PETRA Semi-Inset
\$249 • RB4063
420 x 420 x 50 mm



PETRA MINI Semi-Inset
\$199 • RB2601
433 x 303 x 55 mm



PETRA MINI Semi-Recessed
\$249 • RB5050
400 x 360 x 160 mm



PETRA Semi-Recessed
\$249 • RB4044
500 x 420 x 120 mm



PETRA Left-Hand Wall-Mounted
\$375 • RB2223L
600 x 420 x 120 mm



PETRA Right-Hand Wall-Mounted
\$375 • RB2223R
600 x 420 x 120 mm

STYLING TIP
If selecting special tapware colours, avoid colour clashes by adding a matching overflow ring.

White \$10 • OVERFLOWSQW
Black \$10 • OVERFLOWSQB



Accessible Compliant



Accessible Compliant



PETRA 800 Left-Bowl Wall Basin
\$749 • RB1603L
800 x 420 x 150 mm



PETRA 800 Right-Bowl Wall Basin
\$749 • RB1603R
800 x 420 x 150 mm



PETRA Undermount
\$249 • RB560
560 x 415 x 190 mm



Reba

COLLECTION

With dynamic geometry and pops of colour, the Reba collection celebrates a circular bowl shape suitable for use in any modern bathroom. With various configurations available, and matching pop-up wastes, you can add a unique style to your bathroom design.

MATCHING CERAMIC POP-UP WASTES



Gloss White
\$60 • WAS81



Matte White
\$60 • WAS59MW



Matte Pink
\$60 • WAS59P



Matte Green
\$60 • WAS59GR



Matte Blue
\$60 • WAS59BLUE



Matte Light Grey
\$60 • WAS59LG



Matte Dark Grey
\$60 • WAS59DG



Matte Black
\$60 • WAS59MB



REBA MINI Above Counter
\$199 • RB3280
310 x 310 x 110 mm



REBA Gloss White Above Counter
\$199 • RB3134
360 x 360 x 120 mm



REBA Matte White Above Counter
\$329 • RB3134W
360 x 360 x 120 mm



REBA Matte Pink Above Counter
\$329 • RB3134P
360 x 360 x 120 mm



REBA Matte Green Above Counter
\$329 • RB3134G
360 x 360 x 120 mm



REBA Matte Blue Above Counter
\$329 • RB3134BLUE
360 x 360 x 120 mm



REBA Matte Light Grey Above Counter
\$329 • RB3134LG
360 x 360 x 120 mm



REBA Matte Dark Grey Above Counter
\$329 • RB3134DG
360 x 360 x 120 mm



REBA Matte Black Above Counter
\$329 • RB3134B
360 x 360 x 120 mm



REBA Semi-Inset
\$199 • RB3134D
362 x 362 x 54 mm



REBA Semi-Inset with Tap Hole
\$220 • RB4066
390 x 390 x 50 mm



REBA Semi-Recessed, No Tap Hole
\$249 • RB4064
360 x 360 x 120 mm



REBA Semi-Recessed with Tap Hole
\$199 • RB4065
390 x 390 x 160 mm



REBA Wall Mounted, Left Bowl
No tap hole \$399 • RB039L
1 tap hole \$424 • RB039L-1
600 x 425 x 168 mm



REBA Wall Mounted, Right Bowl
No tap hole \$399 • RB039R
1 tap hole \$424 • RB039R-1
600 x 425 x 168 mm



Ceramic

ABOVE COUNTER BASINS



ELEANOR Arch Gloss White
\$249 • RB463
415 x 365 x 100 mm

NEW



ELEANOR Arch Matte White
\$420 • RB463MW
415 x 365 x 100 mm

Fienza's range of ceramic basins are made from vitreous china to ensure maximum durability, and resistance to water and moisture.

The ceramic range includes various styles, colours, and gloss or matte finishes depending on the model.



ELEANOR Oval Gloss White
\$249 • RB464
580 x 360 x 100 mm



ELEANOR Round Gloss White
\$249 • RB465
410 x 410 x 100 mm

NEW

NEW



ELEANOR Rectangular Gloss White
\$249 • RB467
500 x 380 x 100 mm



ELEANOR Oval Matte White
\$420 • RB464MW
580 x 360 x 100 mm



ELEANOR Round Matte White
\$420 • RB465MW
410 x 410 x 100 mm



FORMA
\$249 • RB480
415 x 365 x 100 mm



RAK-FEELING Round
\$320 • 606000W
420 x 420 x 145 mm

RAK
CERAMICS

NEW



RAK-CLOUD Matte White
\$516 • 6000500A
580 x 400 x 150 mm

RAK
CERAMICS



PAOLA
\$199 • RB3078
410 x 340 x 145 mm



KEETO
\$249 • RB814
500 x 350 x 95 mm



KOKO® 370
\$199 • RB184
370 x 370 x 115 mm



KOKO® 465 Gloss White
\$199 • RB185
465 x 375 x 115 mm



ALIX
\$249 • RB3130
350 x 390 x 100 mm



KOKO® 465 Matte White
\$480 • RB185MW
465 x 375 x 115 mm



KOKO® 465 Matte Black
\$480 • RB185B
465 x 375 x 115 mm

CERAMIC ABOVE COUNTER BASINS



PETRA No Tap Hole
\$199 • RB196
390 x 390 x 130 mm



CHLOE
\$199 • RB2245
400 x 400 x 105 mm



EVIE
\$199 • TR4322
400 x 400 x 120 mm



RAK-FEELING Oval
\$320 • 606100W
550 x 350 x 145 mm

RAK
CERAMICS



LUCIANA® Gloss White
\$249 • RB2178
510 x 405 x 110 mm



LUCIANA® Matte Black
\$430 • RB2178B
510 x 405 x 110 mm



RAK-FEELING Rectangular
\$320 • 606200W
500 x 360 x 130 mm

RAK
CERAMICS



CHICA 405
\$199 • RB2201
405 x 405 x 120 mm



CHICA 500
\$199 • RB2202
505 x 385 x 120 mm



PETRA MINI
\$249 • RB2177
420 x 420 x 120 mm



PETRA Gloss White
1 tap hole \$249 • RB2173
3 tap holes \$299 • RB2173-3
500 x 420 x 120 mm



PETRA Matte Black
1 tap hole \$460 • RB2173B
3 tap holes \$510 • RB2173B-3
500 x 420 x 120 mm



HELEN
\$249 • RB71
470 x 470 x 170 mm



COMO
\$199 • 7078W
475 x 435 x 80 mm



MODENA BABY
\$165 • TR4549
330 x 290 x 120 mm



HELEN JUNIOR
\$199 • TR4148
380 x 380 x 125 mm



WILLOW
1 tap hole \$249 • RB7033
3 tap holes \$299 • RB7033-3
495 x 395 x 150 mm



MODENA
\$285 • RB07N
590 x 450 x 150 mm



Concrete

ABOVE COUNTER BASINS

Embracing natural materials, Jada basins have unique visual appeal with variations in patina, surface and colour. They are designed to blend naturally with your bathroom to create a rich, authentic space.



JADA Warm Grey
\$399 • RB199
390 x 390 x 120 mm



Cast Stone

ABOVE COUNTER BASINS

Cast stone basins have a smooth matte finish and are made with the same solid material all the way through. Made with a special formula, Fienza basins do not crack or turn yellow over time like some other solid surface materials available in the market. If white cast stone basins are damaged, they can be sanded and refinished like new.



RONDO 400
 1 tap hole \$399 • CSB09
 3 tap holes \$449 • CSB09-3
 410 x 415 x 105 mm



RONDO 600
 1 tap hole \$469 • CSB010
 3 tap holes \$519 • CSB010-3
 600 x 415 x 105



ANTONIA Matte White
 \$499 • CSB088
 600 x 410 x 110 mm



NERO Matte White
 \$499 • CSB63
 580 x 380 x 145 mm



BAHAMA MKII Matte White
 \$499 • CSB61
 600 x 357 x 160 mm



LEXY Matte White
 \$399 • CSB038
 380 x 380 x 160 mm



BAHAMA Matte White
 \$399 • CSB01
 600 x 350 x 105 mm



CLASSIQUE 600 Matte White
 \$449 • CSB03
 600 x 345 x 105 mm



CLASSIQUE 420 Matte White
 \$399 • CSB02
 420 x 420 x 105 mm



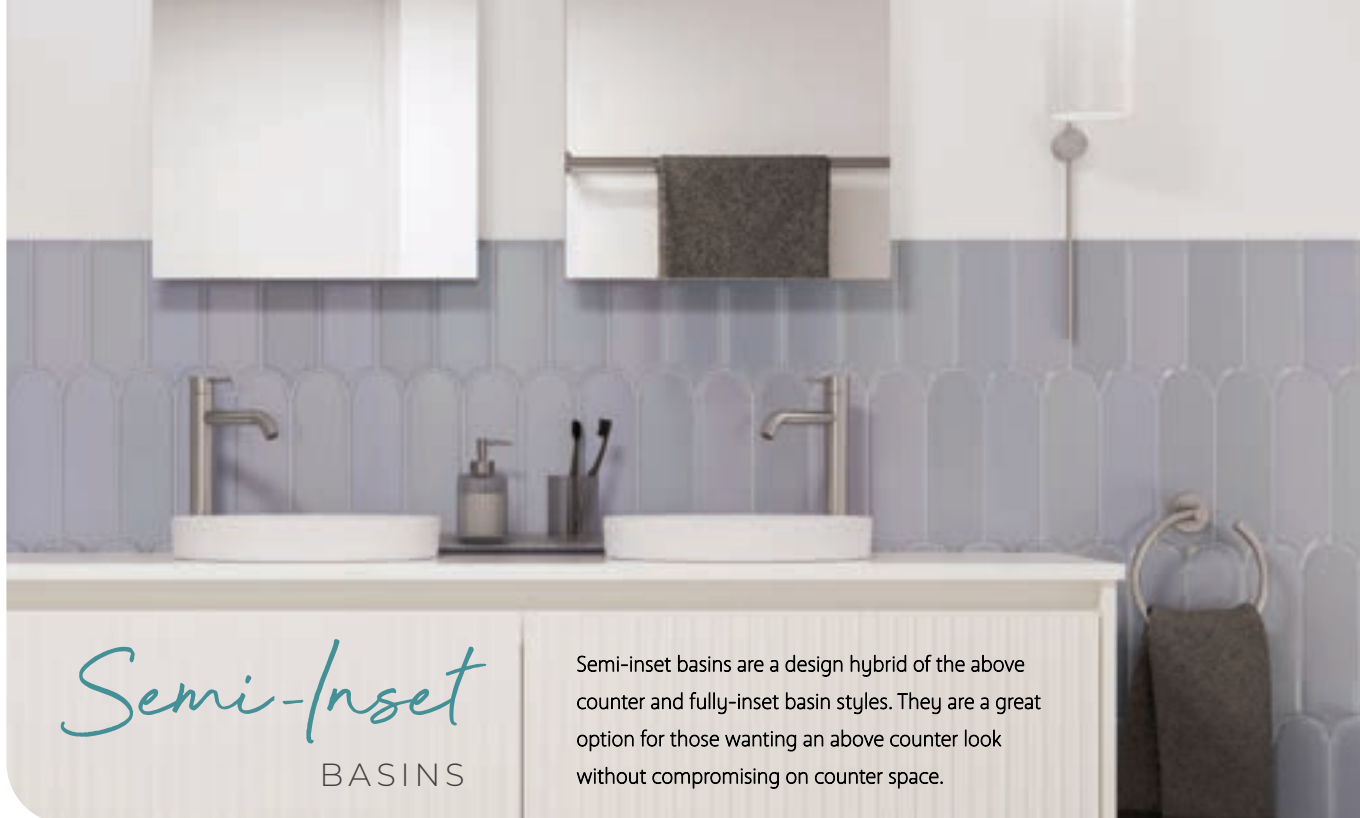
BAHAMA Matte Black
 \$599 • CSB01-MB
 600 x 350 x 105 mm



CLASSIQUE 600 Matte Black
 \$649 • CSB03-MB
 600 x 345 x 105 mm



CLASSIQUE 420 Matte Black
 \$599 • CSB02-MB
 420 x 420 x 105 mm



Semi-Inset BASINS

Semi-inset basins are a design hybrid of the above counter and fully-inset basin styles. They are a great option for those wanting an above counter look without compromising on counter space.



REBA Ceramic
\$199 • RB3134D
362 x 362 x 54 mm



REBA Ceramic with Tap hole
\$220 • RB4066
390 x 390 x 50 mm



PARISA Ceramic
1 tap hole \$249 • RB5033-1
No tap hole \$249 • RB5033-0
515 x 370 x 65 mm



PETRA Ceramic
\$249 • RB4063
420 x 420 x 50 mm



PETRA MINI Ceramic
\$199 • RB2601
433 x 303 x 55 mm



SARAH Ceramic
\$199 • RB4071
440 x 310 x 50 mm



KADOS Cast Stone
\$420 • CSB05
450 x 330 x 80 mm



ALISON Ceramic
\$249 • TR4975
405 x 405 x 60 mm



LOW PROFILE Ceramic
1 tap hole \$249 • TR4034A
3 tap holes \$299 • TR4034A-3
500 x 445 x 85 mm
(Cannot be used with Fienza Stone
& Timber Top Vanity Cabinets)

Fully-Inset BASINS

A fully-inset basin is set below the counter top with a low-profile lip to help it sit in place. Often referred to as a drop-in basin, it requires a special cut in the counter top so it can be dropped in and fitted securely.



NEW

STELLA Ceramic
1 tap hole \$120 • RB405-1
3 tap holes \$120 • RB405-3
515 x 432 x 193 mm



CRYSTAL Ceramic
1 tap hole \$120 • TR4056-1
3 tap holes \$120 • TR4056-3
515 x 450 x 190 mm



LACY Ceramic
1 tap hole \$120 • RB506A
3 tap holes \$170 • RB506A-3
565 x 480 x 218 mm
(Cannot be used with Fienza Stone & Timber Top Vanity Cabinets)

CAN ALSO BE
UNDERMOUNTED

RAK
CERAMICS

RAK
CERAMICS



ALLISON Ceramic
1 tap hole \$199 • TR4583
3 tap holes \$249 • TR4583-3
425 x 425 x 170 mm



RAK-EMMA Ceramic
\$249 • 602700W
404 x 404 x 193 mm



RAK-JESSICA Ivory Ceramic
1 tap hole \$220 • 603201I
3 tap holes \$220 • 603203I
530 x 435 x 225 mm



RAK
CERAMICS

RAK-CHAMELION Ceramic
\$260 • 602900W
560 x 325 x 135 mm



Semi-Recessed

BASINS

These basins are partially recessed into the counter top with the basin protruding from the front of the vanity. They provide easier access to the tap and bowl and are great for small bathrooms and powder rooms where shallow counter tops are used.



BELINDA Ceramic
\$199 • RB8050B
525 x 425 x 153 mm



SEMI-RECESSED



PETRA Ceramic
\$249 • RB4044
500 x 420 x 120 mm



PETRA MINI Ceramic
\$249 • RB5050
400 x 360 x 160 mm



HELEN JUNIOR Ceramic
\$199 • 2041B
415 x 410 x 145 mm



Accessible Compliant



JACINTA Ceramic
1 tap hole \$199 • RB8050J
3 tap holes \$249 • RB8050J-3
480 x 460 x 150 mm



REBA Ceramic, No Tap Hole
\$249 • RB4064
360 x 360 x 120 mm



REBA Ceramic with Tap Hole
\$199 • RB4065
390 x 390 x 160 mm



Accessible Compliant

RAK CERAMICS



RAK-RESERVA Ceramic
1 tap hole \$349 • 606601W
3 tap holes \$379 • 606603W
560 x 515 x 185 mm

RAK CERAMICS



RAK-COMPACT Ceramic
1 tap hole \$230 • 603701W
3 tap holes \$260 • 603703W
550 x 415 x 195 mm



MICKI Ceramic
1 tap hole \$170 • RB760
515 x 430 x 175 mm



Pedestal

BASINS

Whether you're seeking a space saving solution, or want to make a statement, a pedestal basin can bring a new level of refinement and class to your space. Go ultra-modern with the latest RAK-CLOUD or turn back time with RAK-WASHINGTON for the ultimate period centrepiece.

NEW



RAK
CERAMICS

RAK-CLOUD Matte White Ceramic
1 tap hole \$963 • 5001500A
500 x 900 mm



RAK
CERAMICS

RAK-COMPACT 550 Gloss White Ceramic
1 tap hole \$315 • 611231W
3 tap holes \$345 • 611233W
550 x 410 x 820 mm



RAK
CERAMICS

RAK-WASHINGTON Gloss White Ceramic
1 tap hole \$799 • 611581W
3 tap holes \$829 • 611583W
560 x 420 x 840 mm

Undermount BASINS

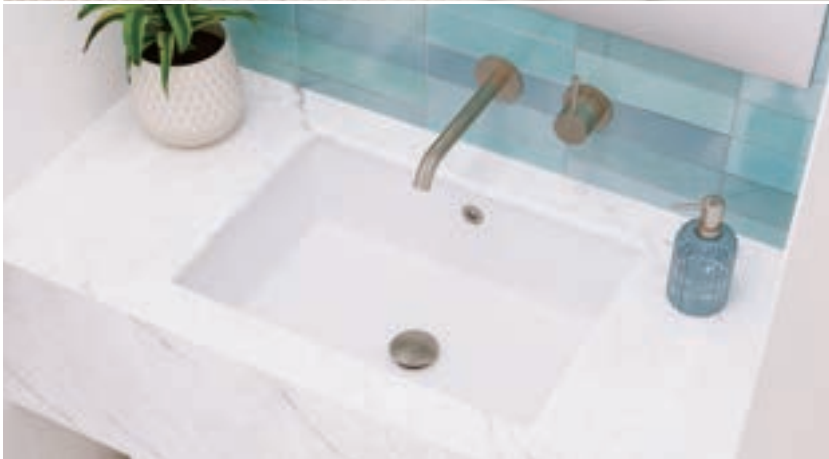
This type of basin is mounted to the counter top from underneath. They provide plenty of counter space and make cleaning easy.

UNDERMOUNT

NEW



KOKO Ceramic
\$249 • RB561
465 x 350 x 180 mm



PETRA Ceramic
\$249 • RB560
560 x 415 x 190 mm



KARMEN Ceramic
\$105 • TR908
455 x 380 x 195 mm



SARAH Ceramic
\$199 • TR4070
465 x 345 x 210 mm

Wall

BASINS

Wall-mounted or wall-hung basins are mounted to the wall leaving the pipework and fittings exposed underneath. This space saving design makes it the perfect choice for small bathrooms.

Wall-mounted basins are also used for bathrooms requiring wheelchair access as they have a clear space underneath.



Accessible Compliant



DELTA CARE Ceramic, Left-Hand

\$349 • RB2275L

575 x 400 x 163 mm



Accessible Compliant



DELTA CARE Ceramic, Right-Hand

\$349 • RB2275R

575 x 400 x 163 mm



PETRA Ceramic, Left-Hand

\$375 • RB2223L

600 x 420 x 120 mm



Accessible Compliant

NEW



Accessible Compliant

NEW



PETRA 800 Left-Bowl Wall Basin

\$749 • RB1603L

800 x 420 x 150 mm



PETRA 800 Right-Bowl Wall Basin

\$749 • RB1603R

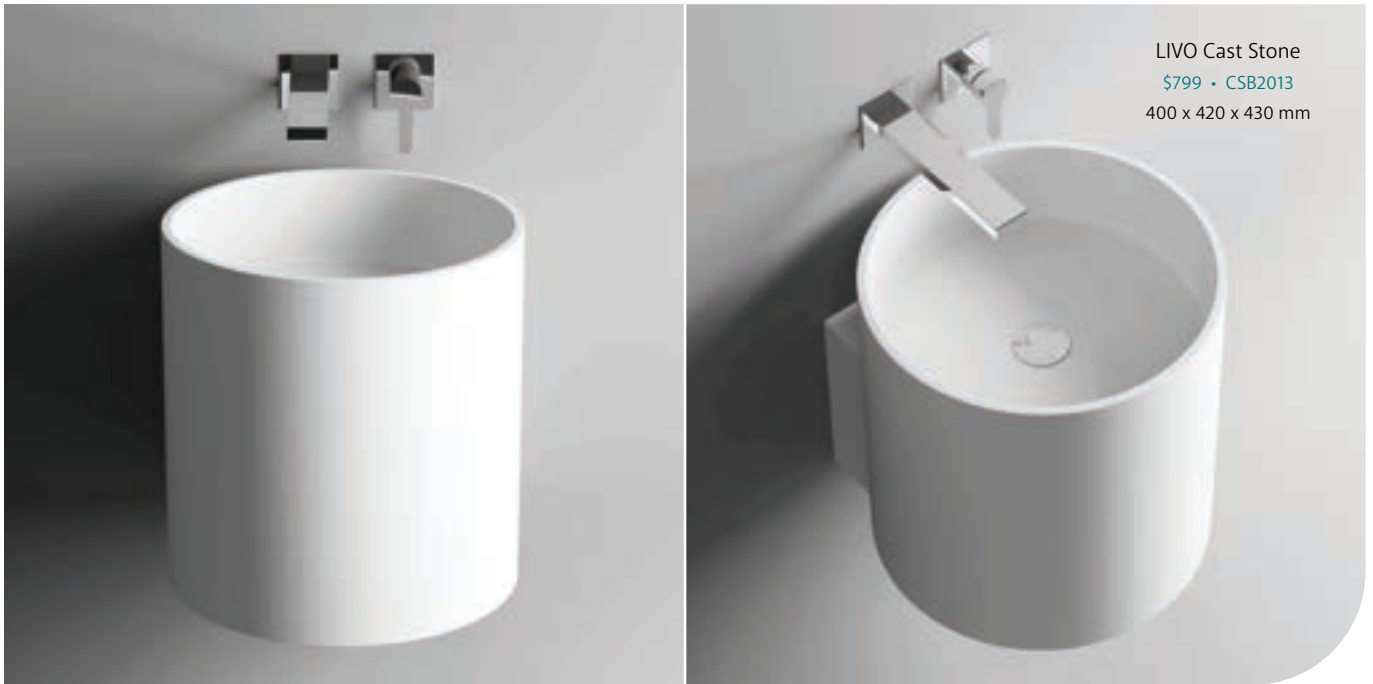
800 x 420 x 150 mm



PETRA Ceramic, Right-Hand

\$375 • RB2223R

600 x 420 x 120 mm



LIVO Cast Stone
\$799 • CSB2013
400 x 420 x 430 mm



LINEA Ceramic, Left-Hand
\$199 • TR4127
500 x 250 x 144 mm



LINEA Ceramic, Right-Hand
\$199 • TR4127A
500 x 250 x 144 mm



JUNIOR Ceramic
\$220 • RB5008
280 x 345 x 125 mm



CHARLOTTE Ceramic
\$160 • TR4523
440 x 250 x 120 mm



RAK
CERAMICS

RAK-COMPACT 450 Ceramic
1 tap hole \$189 • 601101W
3 tap holes \$219 • 601103W
450 x 360 x 195 mm



RAK
CERAMICS

RAK-COMPACT 550 Ceramic
1 tap hole \$215 • 601201W
3 tap holes \$245 • 601203W
550 x 410 x 195 mm



RAK
CERAMICS

RAK-WASHINGTON Ceramic
1 tap hole \$540 • 601501W
3 tap holes \$570 • 601503W
560 x 420 x 200 mm



RAK
CERAMICS

RAK-COMPACT SLIM Ceramic
\$195 • 601301W
450 x 215 x 180 mm



RAK
CERAMICS

RAK-LARA Ceramic
1 tap hole \$169 • 600101W
3 tap holes \$199 • 600103W
510 x 405 x 185 mm

IMAGINE YOUR SPACE

RAK Ceramics is one of the largest ceramics' brands in the world. Specialising in ceramic and gres porcelain wall and floor tiles, tableware, sanitaryware and faucets.



RAK CERAMICS

NEW



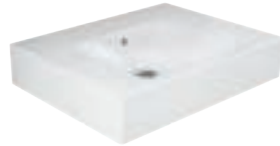
RAK-CLOUD Matte White Ceramic
\$494 • 5501500A
550 x 425 x 150 mm



RAK-CLOUD celebrates soft curves and fluid lines, designed by award winning Italian designer Giuseppe Maurizio.

RAK CERAMICS

NEW



RAK-DES 61 Alpine White Ceramic
No tap hole \$435 • 06100AWHA
610 x 460 x 120 mm

RAK CERAMICS

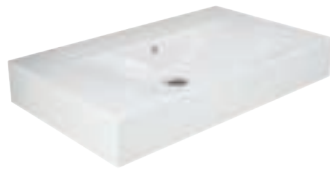
NEW



RAK-DES 61 Alpine White Ceramic
1 tap hole \$451 • 06101AWHA
610 x 460 x 120 mm

RAK CERAMICS

NEW



RAK-DES 81 Alpine White Ceramic
No tap hole \$528 • 08100AWHA
810 x 460 x 120 mm

RAK CERAMICS

NEW



RAK-DES 81 Alpine White Ceramic
1 tap hole \$545 • 08101AWHA
810 x 460 x 120 mm

RAK CERAMICS

NEW



RAK-DES 121 Alpine White Ceramic
2 tap hole \$748 • 12101AWHA
1010 x 460 x 120 mm

RAK CERAMICS

NEW



RAK-DES 101 Alpine White Ceramic
No tap hole \$567 • 10100AWHA
1010 x 460 x 120 mm

RAK CERAMICS

NEW



RAK-DES 101 Alpine White Ceramic
1 tap hole \$583 • 10101AWHA
1010 x 460 x 120 mm



NEW



RAK-PETIT Square Left Ledge
Alpine White Ceramic
No tap hole \$281 • 37700AWHA
765 x 360 x 140 mm

RAK
CERAMICS

NEW



RAK-PETIT Square Left Ledge
Alpine White Ceramic
1 tap hole \$292 • 37701AWHA
765 x 360 x 140 mm

RAK
CERAMICS

NEW



RAK-PETIT Square Right Ledge
Alpine White Ceramic
No tap hole \$281 • 47700AWHA
765 x 360 x 140 mm

RAK
CERAMICS

NEW



RAK-PETIT Square Right Ledge
Alpine White Ceramic
1 tap hole \$292 • 47701AWHA
765 x 360 x 140 mm

RAK
CERAMICS

Basin Accents



UNIVERSAL POP-UP/PULL-OUT WASTES (32/40 mm waste)

Our Universal Pop-Up/Pull-Out wastes are convertible for use with or without an overflow. The entire top section of the waste can be pulled out for easy cleaning.



Chrome
\$49 • WAS72



Brushed Nickel
\$80 • WAS72BN



Gun Metal
\$80 • WAS72GM



Matte Black
\$80 • WAS72MB



Urban Brass
\$80 • WAS72UB



Warm Grey Concrete
\$100 • WAS72CC

POP-UP WASTES (32 mm waste)

Dome cap pop-up wastes to suit any colour scheme, available in three cap materials and a range of colours.



Ceramic Cap
Gloss White \$60
No Overflow WAS581
With Overflow WAS582



Ceramic Cap
Matte White \$60
No Overflow WAS59MW
With Overflow WAS58MW



Ceramic Cap
Matte Blue \$60
No Overflow WAS59BLUE
With Overflow WAS58BLUE



Ceramic Cap
Matte Pink \$60
No Overflow WAS59P
With Overflow WAS58P



Ceramic Cap
Matte Green \$60
No Overflow WAS59GR
With Overflow WAS58GR



Ceramic Cap
Matte Light Grey \$60
No Overflow WAS59LG
With Overflow WAS58LG



Ceramic Cap
Matte Dark Grey \$60
No Overflow WAS59DG
With Overflow WAS58DG



Ceramic Cap
Matte Black \$60
No Overflow WAS59MB
With Overflow WAS58MB



Cast Stone Cap
Matte White \$65
No Overflow WAS59W
With Overflow WAS58W



Cast Stone Cap
Matte Black \$65
No Overflow WAS59B
With Overflow WAS58B



Brass Cap
Chrome \$30
No Overflow WAS59
With Overflow WAS58



OVERFLOW RINGS

For above counter and semi-inset basins



Chrome
\$10 • OVERFLOWCHR



Matte White
\$15 • OVERFLOWMW



Matte Black
\$10 • OVERFLOWBLK



Brushed Nickel
\$16 • OVERFLOWBN



Gun Metal
\$16 • OVERFLOWGM



Urban Brass
\$16 • OVERFLOWUB



Rectangular White
\$10 • OVERFLOWSQW



Rectangular Black
\$10 • OVERFLOWSQB



S H I B A T H S

Acrylic BATHS

Acrylic baths are an economical way to get the style you want for a fraction of the cost. With our high-quality materials and stunning styles there are several options for spaces big and small.

ACRYLIC WITH LUCITE MMA

Compared to standard acrylics this material is stronger and straighter, giving our modern styles a crisp, flawless design. This material is UV stabilised to prevent yellowing over time and is manufactured with a gloss or matte finish.

EASY INSTALLATION & SETUP

Our acrylic baths have an in-built metal support frame and adjustable legs for precise installation.

CUSTOMISE WITH ACCENTS

All acrylic baths come with a chrome pull-out/pop-up waste as standard. If you want to customise the look, select from our coloured pull-out/pop-up wastes below.



Gloss White
(For Acrylic Baths Only)

No overflow **\$80** • WAS79GW
With overflow **\$80** • WAS78GW



Matte White
(For Acrylic Baths Only)

No overflow **\$80** • WAS79MW
With overflow **\$80** • WAS78MW



Brushed Nickel

No overflow **\$80** • WAS79BN
With overflow **\$80** • WAS78BN



Gun Metal

No overflow **\$80** • WAS79GM
With overflow **\$80** • WAS78GM



Matte Black

No overflow **\$80** • WAS79MB
With overflow **\$80** • WAS78MB



Urban Brass

No overflow **\$80** • WAS79UB
With overflow **\$80** • WAS78UB



Structural Integrity
and Gloss Finishes



Matte Finishes

For full warranty terms and conditions, visit [fienza.com.au](https://www.fienza.com.au)

Freestanding ACRYLIC BATHS



1700 model shown



1680 model shown

NEW



ELEANOR

1500 x 750 x 580 mm \$2295 • FR711-1500



Lucite MMA



Waste Included



No Overflow

NEW



ELEANOR

1700 x 800 x 580 mm \$2350 • FR711-1700



Lucite MMA



Waste Included



No Overflow



KOKO® Matte White

1500 x 720 x 580 mm \$2299 • FR11572

1680 x 750 x 580 mm \$2399 • FR11775



Lucite MMA



Waste Included



No Overflow



1500 model shown

*Modern
Vintage*
COLLECTION



CLAWFOOT with Chrome Feet

1500 x 750 x 815 mm \$1699 • FR2550-1500C
1700 x 780 x 795 mm \$1699 • FR2550-1700C



CLAWFOOT with Semi-Gloss White Feet

1500 x 750 x 815 mm \$1799 • FR2550-1500W
1700 x 780 x 795 mm \$1799 • FR2550-1700W

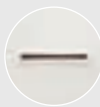


CLAWFOOT with Matte Black Feet

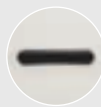
1500 x 750 x 815 mm \$1799 • FR2550-1500B
1700 x 780 x 795 mm \$1799 • FR2550-1700B

OPTIONAL CLAWFOOT OVERFLOW RINGS

(Chrome overflow ring included with bath)



Semi-Gloss White
\$15 • OVERFLOW-FR2550W



Matte Black
\$15 • OVERFLOW-FR2550B



Lucite MMA



Waste
Included



Overflow



ATHENIA

\$1899 • FR15675

1700 x 760 x 600 mm



Lucite MMA



Waste
Included



No Overflow



1700 model shown



DAYO

1500 x 720 x 620 mm \$1949 • FR94-1500
 1700 x 780 x 620 mm \$2049 • FR94-1700



Lucite MMA



Waste Included



No Overflow



1400 model shown



EMPIRE

\$1675 • FR18-1400
 1400 x 720 x 590 mm



Lucite MMA



Waste Included



No Overflow



1500 model shown



AUSTIN

1500 x 750 x 580mm \$1499 • FR71-1500
 1700 x 810 x 580 mm \$1499 • FR71-1700



Lucite MMA



Waste Not Included



No Overflow



PAOLA

\$1845 • FR11

1500 x 750 x 680 mm



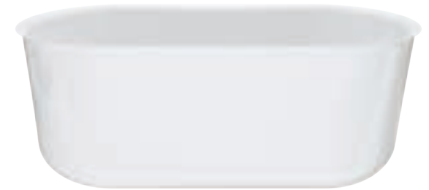
Lucite MMA



Waste Included



No Overflow



WINDSOR Gloss White

1500 x 720 x 580 mm \$1849 • FR72-1500

1700 x 780 x 600 mm \$1949 • FR72-1700



Lucite MMA

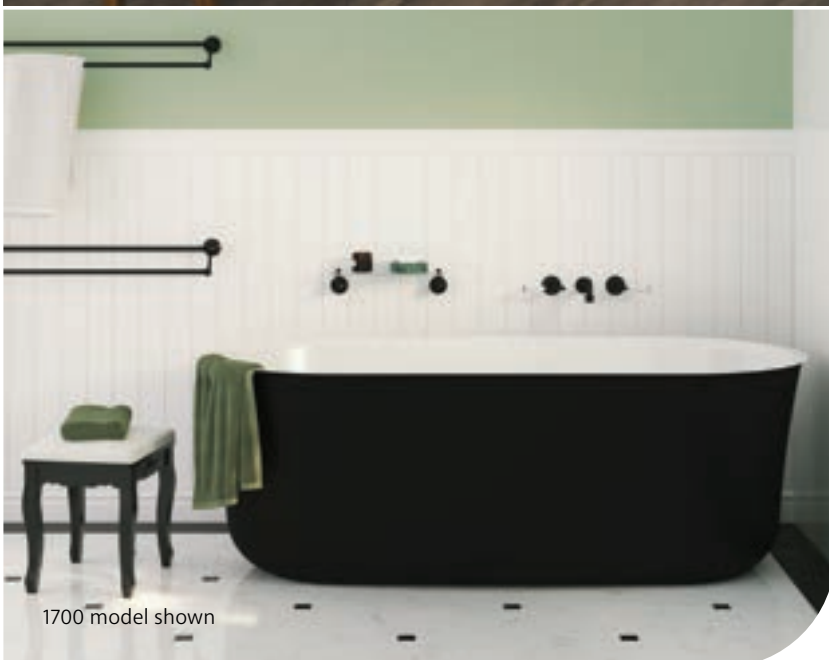


Waste Included



No Overflow

1500 model shown



WINDSOR Matte Black
with Gloss White Interior

1500 x 720 x 580 mm \$2149 • FR72-1500B

1700 x 780 x 600 mm \$2249 • FR72-1700B



Lucite MMA



Waste Included



No Overflow

1700 model shown

Corner

ACRYLIC BATHS



Corner baths are designed to maximise floor space in your bathroom, fitting snugly into the corner of the room. They are ideal for small bathrooms and can even be used in a shower-over-bath configuration. Corner baths also make cleaning easy with no nooks or crannies to clean around.



ISABELLA Left-Hand

1500 x 750 x 600 mm \$1820 • FR67-1500L
 1700 x 780 x 600 mm \$1860 • FR67-1700L



Lucite MMA



Waste Included



No Overflow



ISABELLA Right-Hand

1500 x 750 x 600 mm \$1820 • FR67-1500R
 1700 x 780 x 600 mm \$1860 • FR67-1700R



Lucite MMA



Waste Included



No Overflow

NEW



ELEANOR Left-Hand
1500 x 750 x 580 mm \$2295 • FR713-1500L

- Lucite MMA
- Waste Included
- No Overflow

NEW



ELEANOR Right-Hand
1500 x 750 x 580 mm \$2295 • FR713-1500R

- Lucite MMA
- Waste Included
- No Overflow

105MM
INTEGRATED
SHELF



CHLOE Left-Hand
\$1799 • FR75-1400L
1400 x 750 x 600 mm

- Lucite MMA
- Waste Included
- No Overflow

105MM
INTEGRATED
SHELF



CHLOE Right-Hand
\$1799 • FR75-1400R
1400 x 750 x 600 mm

- Lucite MMA
- Waste Included
- No Overflow



SENTOR Left-Hand
1500 x 750 x 525 mm \$1540 • FR02-1500L
1650 x 750 x 525 mm \$1540 • FR02-1650L

- Lucite MMA
- Waste Included
- No Overflow



SENTOR Right-Hand
1500 x 750 x 525 mm \$1540 • FR02-1500R
1650 x 750 x 525 mm \$1540 • FR02-1650R

- Lucite MMA
- Waste Included
- No Overflow

Back-to-Wall ACRYLIC BATHS



1700 model shown



KEETO

1500 x 780 x 580 mm \$1815 • FR65-1500
1700 x 800 x 580 mm \$1930 • FR65-1700



Lucite MMA



Waste Included



No Overflow



DELTA 1700

\$1849 • FR8773

1700 x 750 x 600 mm



Lucite MMA



Waste Included



No Overflow



DELTA 1500

\$1799 • FR13572

1500 x 750 x 600 mm



Lucite MMA



Waste Included



No Overflow



1700 model shown



NEW

ELEANOR

\$2295 • FR716-1500
1500 x 750 x 580 mm



Lucite MMA



Waste Included



No Overflow



NEW

ELEANOR

\$2350 • FR716-1700
1700 x 800 x 580 mm



Lucite MMA



Waste Included



No Overflow

Resin Stone BATHS

Our unique formula provides a lightweight alternative to a cast stone solid surface bath, giving you similar quality for less. Each Fienza resin stone bath comes with a chrome pull-out/pop-up waste as standard. If you want to customise the look, choose from our coloured pop-up wastes on page 54.



Chrome Pull-Out/Pop-Up Waste
\$50 • WAS79
(Included with ENCANTO bath)

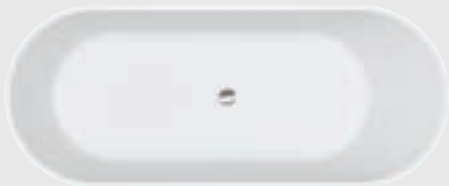
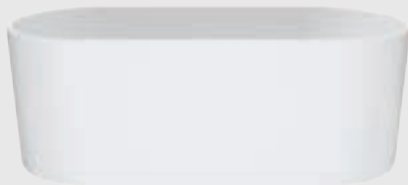


Structural Integrity



Finish

For full warranty terms and conditions, visit fienza.com.au



ENCANTO
\$3799 • SS07
1700 x 700 x 600 mm



Waste Included



No Overflow



Concrete BATHS

Embracing natural materials, each of our Fienza concrete baths have a unique visual appeal with variations in patina, surface and colour. These visual characteristics have no effect on structural integrity, nor are they defects. Each piece is unique and will blend with your bathroom to create a rich, authentic space.



Concrete Pull-Out/Pop-Up Waste
\$99 • WAS79CC
(Included with JADA bath)



Concrete

For full warranty terms and conditions, visit fienza.com.au



JADA

\$5500 • FC12

1500 x 750 x 525 mm



Waste Included



No Overflow



VELVET-SMOOTH MATTE FINISHES

Our cast stone solid surface baths are manufactured to the highest standards with a velvet-smooth matte finish. Baths with a white finish can be sanded and refinished as new.

DURABLE, SOLID SURFACE MATERIAL

Made with our specially formulated cast stone solid surface material, our baths do not crack or turn yellow over time like other alternatives on the market.

POP-UP/PULL-OUT WASTES

All cast stone baths come with a chrome pop-up/pull-out waste as standard. If you want to customise the look, choose from our coloured wastes below.



Matte White Stone
Pop-Up/Pull-Out Waste
(For Stone Baths Only)
No overflow **\$85 • WAS79W**
With overflow **\$85 • WAS78W**



Matte Black Stone
Pop-Up/Pull-Out Waste
(For Stone Baths Only)
No overflow **\$85 • WAS79B**
With overflow **\$85 • WAS78B**



Brushed Nickel
Pop-Up/Pull-Out Waste
No overflow **\$80 • WAS79BN**
With overflow **\$80 • WAS78BN**



Gun Metal
Pop-Up/Pull-Out Waste
No overflow **\$80 • WAS79GM**
With overflow **\$80 • WAS78GM**



Matte Black
Pop-Up/Pull-Out Waste
No overflow **\$80 • WAS79MB**
With overflow **\$80 • WAS78MB**



Urban Brass
Pop-Up/Pull-Out Waste
No overflow **\$80 • WAS79UB**
With overflow **\$80 • WAS78UB**

Cast Stone BATHS

The ultimate in luxury, cast stone solid surface baths provide a resort-look and quality feel to enhance everyday living. Elevate your bathroom with a unique style from our extensive range.



Structural Integrity



Finish

For full warranty terms and conditions, visit fienza.com.au



1500 model shown



KAYA Matte White

1500 x 750 x 575 mm \$3599 • SS350
 1700 x 800 x 575 mm \$3960 • SS350-1700



Waste Included



No Overflow



1500 model shown



BAHAMA Matte White

1500 x 760 x 540 mm \$3699 • ST03-1500
 1685 x 885 x 560 mm \$3949 • ST03



Waste Included



Overflow



BAHAMA Matte Black

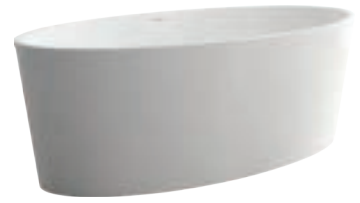
\$5400 • ST03-MB
 1700 x 840 x 545 mm



Waste Included



Overflow



LEXY

\$3860 • ST01

1600 x 750 x 600 mm



Waste Included



Overflow



LAGOONA

\$4200 • ST04

1810 x 930 x 520 mm



Waste Included



Overflow



MARISSA

\$4100 • ST18

1700 x 720 x 560 mm



Waste Included



Overflow



1780 model shown



NERO

1400 x 700 x 520 mm \$3350 • ST12-1400

1550 x 770 x 520 mm \$3490 • ST12-1550

1780 x 880 x 520 mm \$4099 • ST12



Waste Included



Overflow



1500 model shown



LUCIANA® Matte Black

1500 x 750 x 550 mm \$4999 • ST11-B

1690 x 800 x 550 mm \$5400 • ST11-1700B



Waste Included



Overflow



1550 model shown



SASSO

1550 x 750 x 550 mm \$3800 • ST28-1550

1650 x 800 x 560 mm \$3900 • ST28-1650



Waste Included



Overflow



HAMPTON

\$4200 • ST17

1600 x 800 x 600 mm



Waste Included



Overflow



ANTONIA

\$3600 • ST19

1550 x 780 x 580 mm



Waste Included



Overflow



SHINTO

\$5300 • ST13

1350 x 1350 x 490 mm



Waste Included



Overflow



RAK
CERAMICS



RAK-WASHINGTON Matte White
\$5999 • ST68
1560 x 810 x 545 mm



RAK-WASHINGTON Matte Grey
\$5999 • ST68G
1560 x 810 x 545 mm



RAK-WASHINGTON Matte Black
\$5999 • ST68B
1560 x 810 x 545 mm



Waste
Included



Overflow



Made
in Italy



fienza®

Beautiful, quality
Bathware

At Fienza our core passion is to excite you with new, innovative and cutting-edge designer products.

Our commitment to international quality standards has ensured that Fienza continues to be the preferred choice for beautiful bathrooms and kitchens all over Australia.

Fienza® products are available through all leading bathroom, kitchen and plumbing retailers.

For more information, contact us or visit our website:

P (07) 3490 6700

E info@fienza.com.au

www.fienza.com.au

Retailer/Distributor: